

NEAR AND ELSEWHERE



Lucien Anderson (B. 1992)
They Had All Forgotten How to Start a Fire, 2022
Wood, MDF, sack cart wheels, paint
150h x 110w x 73d cm



Lucien Anderson (B. 1992)
Untitled Study, 2022
Wood, model boat
225h x 70w x 50d cm



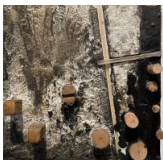
Lucien Anderson (B. 1992)
Waterworld, 2022
Wood, chair
115h x 58w x 44d cm



Raymond Attfield
Archéologie I, 2012
Twigs, wax, tar and silicone
25h x 25w cm



Raymond Attfield
Archéologie II, 2012
Twigs, wax, tar and silicone
25h x 25w cm



Raymond Attfield
Archéologie III, 2012
Twigs, wax, tar and silicone
25h x 25w cm



Raymond Attfield
Archéologie IV, 2012
Twigs, wax, tar and silicone
25h x 25w cm



Raymond Attfield
Archéologie V, 2012
Twigs, wax, tar and silicone
25h x 25w cm



Raymond Attfield
Tribal I, 2013
Twigs, wax and tar
25h x 25w x 8d cm



Raymond Attfield
Tribal II, 2013
Twigs, wax and tar
25h x 25w x 8d cm



Raymond Attfield
Les Parasols d'Avignon, 2017
Écorce de platane, C18 nails, white paint, particle board base
11h x 12.50w x 12.50d cm



Raymond Attfield
Memento Mori, 2017
Natural twig, nails, wax, white paint and particle board base
11h x 12.50w x 12.50d cm



Raymond Attfield
Press, 2012
Hard wood frame, lightweight concrete and block painted
20h x 10w x 10d cm



Raymond Attfield
Forme jumelle, 2012
Hardwood various
20h x 10w x 10d cm



Raymond Attfield
Forme jumelle II, 2012
Hardwood various
20h x 10w x 10d cm



Raymond Attfield
Un Stère, 2017
Chene verte
10h x 10w x 10d cm



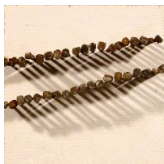
Raymond Attfield
Un Stère Conservé, 2017
Chene verte and silicone
10h x 10w x 10d cm



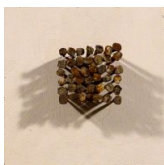
Raymond Attfield
City Plan I, 2015
Twigs from various trees, some burned in wild fires on waxed and stained particle board
50h x 50w cm



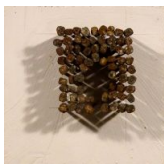
Raymond Attfield
Archétypes Cloués I classification c18, 2108
C18 handmade nails on white painted particle board
12.50h x 12.50w cm



Raymond Attfield
Archétypes Cloués II, 2018
C18 handmade nails on white painted particle board
12.50h x 12.50w cm



Raymond Attfield
Archétypes Cloués III, 2018
C18 handmade nails on white painted particle board
12.50h x 12.50w cm



Raymond Attfield
Archétypes Cloués IV, 2018
C18 handmade nails on white painted particle board
12.50h x 12.50w cm



Raymond Attfield
Archétypes Cloués V, 2018
C18 handmade nails on white painted particle board
12.50h x 12.50w cm



Raymond Attfield
Archétypes Cloués VI, 2018
C18 handmade nails on white painted particle board
12.50h x 12.50w cm



Raymond Attfield
Archétypes Cloués VII, 2018
C18 handmade nails on white painted particle board
12.50h x 12.50w cm



Raymond Attfield
Archétypes Cloués VIII classification C20, 2018
Various 'fixings' on white painted and waxed particle board
12.50h x 12.50w cm



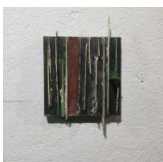
Raymond Attfield
Rainures Avec Croix, 2021
Grooves without the plywood shards, wax and acrylic paint
25h x 25w cm



Raymond Attfield
Fragments Horizontaux, 2021
Grooves with the plywood shards, wax and acrylic paint
25h x 25w cm



Raymond Attfield
Fragments Verts, 2021
Grooves with plywood shards, wax and oil paint
25h x 25w cm



Raymond Attfield
Fragments Avec Espace Rouge, 2021
Grooves with plywood shards, wax and oil paint
12.50h x 12.50w cm



Raymond Attfield
Les Os, 2017
The wood of young Pine set in wax on particle board
25h x 25w cm



Raymond Attfield
Leurs Peaux, 2017
The bark of young Pine set in wax on particle board
25h x 25w cm



Raymond Attfield
Fenêtres I, 2018
Particle board, tar, wax and acrylic paint
25h x 25w cm



Raymond Attfield
Fenêtres II, 2018
Particle board, tar, wax and acrylic paint
25h x 25w cm



Raymond Attfield
Fenêtres III, 2018
Particle board, tar, wax and acrylic paint
25h x 25w cm



Raymond Attfield
Fenêtres IV, 2019
Particle board, tar, wax and acrylic paint
12.50h x 12.50w cm



Raymond Attfield
Fenêtres V, 2019
Particle board, tar, wax and acrylic paint
15h x 15w cm



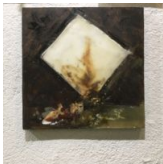
Raymond Attfield
Fenêtres VI, 2019
Particle board, tar, wax and acrylic paint
12.50h x 12.50w cm



Raymond Attfield
Fenêtres VI - X Y, cardo decumanus, 2018
Particle board, tar, wax and acrylic paint
25h x 25w cm



Raymond Attfield
Fenêtres VIII, 2022
Particle board, tar, wax and acrylic paint
25h x 25w cm



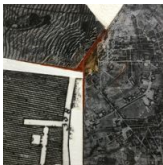
Raymond Attfield
Fenêtres IX, 2022
Particle board, tar, wax and acrylic paint
25h x 25w cm



Raymond Attfield
Villes imaginaires-Rome I, 2022
Printed plans on tracing paper, oil and wax colour, wax over layer
25h x 25w cm



Raymond Attfield
Villes imaginaires-Rome II, 2022
Printed plans on tracing paper, oil and wax colour, wax over layer
25h x 25w cm



Raymond Attfield
Villes imaginaires-Rome III, 2022
Printed plans on tracing paper, oil and wax colour, wax over layer
25h x 25w cm



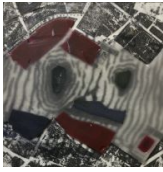
Raymond Attfield
Villes imaginaires-Rome IV, 2022
Printed plans on tracing paper, oil and wax colour, wax over layer
12.50h x 12.50w cm



Raymond Attfield
Villes imaginaires-Rome V, 2022
Printed plans on tracing paper, oil and wax colour, wax over layer
12.50h x 12.50w cm



Raymond Attfield
Villes imaginaires-Rome VI, 2022
Printed plans on tracing paper, oil and wax colour, wax over layer
12.50h x 12.50w cm



Raymond Attfield
Villes imaginaires-Rome VII, 2022
Printed plans on tracing paper, oil and wax colour, wax over layer
12.50h x 12.50w cm



Raymond Attfield
Villes imaginaires-Rome VIII, 2022
Printed plans on tracing paper, oil and wax colour, wax over layer
10h x 10w cm



Raymond Attfield
Villes imaginaires-Rome IX, 2022
Printed plans on tracing paper, oil and wax colour, wax over layer
12h x 25w cm



Raymond Attfield
Arbres Civilisés I, 2022
Natural tree, silicone resin, base with faux grass
120h x 10w x 10d cm



Raymond Attfield
Arbres Civilisés II, 2022
Natural tree, silicone resin, base with faux grass
120h x 10w x 10d cm



Raymond Attfield
Peaux des arbres I, 2022
The bark of the trees in Arbres Civilisé, bedded in silicone, on
particle board
103h x 13w cm



Raymond Attfield
Peaux des arbres II, 2022
The bark of the trees in Arbres Civilisé, bedded in silicone, on
particle board
103h x 13w cm



Jo Dennis

From Home 01, 2021

Acrylic, oil and spray paint on found object, glass, lead and wood
Framed: 59h x 48w cm



Jo Dennis

From Home 02, 2021

Acrylic, oil and spray paint on found object, glass, lead and wood
Framed: 59h x 48w cm



Jo Dennis

Funny Weather 01, 2021

Acrylic, oil and spray paint on found object, glass and wood
Framed: 89h x 66w cm



Jo Dennis

Into the light, 2021

Acrylic, oil and spray paint on found object, glass and wood
Framed: 89h x 66w cm



Jo Dennis

Memories are killing, 2021

Acrylic, oil, household and spray paint on found object, glass and wood
Framed: 84h x 107w cm



Jo Dennis

Warmer 01, 2022

Acrylic, oil and spray paint on found object, glass and wood
Framed: 94h x 77w cm



Jo Dennis

Warmer 02, 2022

Acrylic, oil and spray paint on found object, glass and wood
Framed: 94h x 77w cm



Georg Wilson
Bad Friend II, 2022
Oil on panel
50.80h x 50.90w cm



Georg Wilson
Blood Moon, 2022
Oil on canvas
75h x 50w cm



Georg Wilson
Muscari Mist, 2021
Oil on canvas
40.60h x 30.50w cm



Georg Wilson
The Arrival of Spring, 2021
Oil on canvas
75h x 50w cm



Georg Wilson
The Folly of Man, 2022
Oil on board
40h x 48w cm



Georg Wilson
Three for a Wedding, 2022
Oil on canvas
91.40h x 60.90w cm