

Landscapes

1 August - 1 September 2019

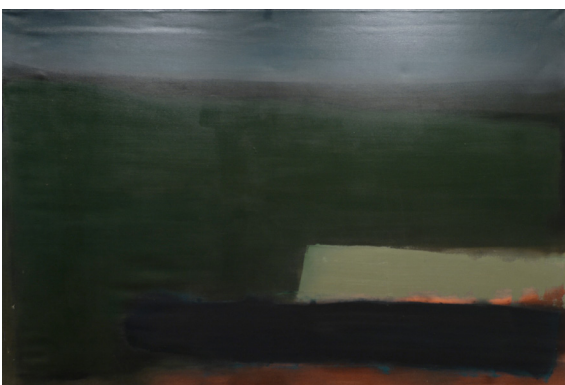
No 20 Arts
20 Cross Street
London N1 2BG

No 20 Arts is proud to present LANDSCAPES, a group exhibition featuring works by Sarah Chalmers, Max Maxwell, Neil Raitt, Keith Roberts, Rosie Snell, Andrew Vass, Elaine Watt, and Katsutoshi Yuasa. LANDSCAPES exhibits works created over the past three decades showing how artists continue to use landscapes to reflect on contemporary issues. Centred around the incorporation of thematic elements relating to conflict, abstraction, and technology, LANDSCAPES is a unique look into how contemporary artists have adapted the historical genre in diverse ways.

Keith Roberts (b. 1960) and Rosie Snell's (b. 1971) work have been informed by modern day conflicts and the physical and emotional mark they have left on the world around us. Informed by the political and physical geography of the Middle East, Keith Roberts' direct approach to landscapes reflect a fearful population being pushed from one horizon to another. Rosie Snell's older work focuses on the contradictory relationship between military constructs and the landscape around them, which they both shape and camouflage within. Her newer work continues to focus on conflicting relationships, exploring them through the vary states of water.



Rosie Snell, *Grüne Hölle* (2008), oil on panel, 165 x 173 cm



Elaine Watt, *Landscape I* (1988), oil on canvas, 124 x 185 cm

The work of Andrew Vass (b. 1961, d. 2015), Max Maxwell (b. 1976), Sarah Chalmers (b. 1957), and Elaine Watt (b. 1965) relate to the abstraction of landscapes. Through abstraction the work of these artists highlights unseen physical and emotional elements of landscapes. Andrew Vass's drawings capture a particular moment between the artist and what lies before him. Choosing not to fully work the landscapes remaining hints towards locations. Interested in showing the qualities of materials which are not normally visible, Max Maxwell utilises chemical processes to create artworks of alchemic beauty. A self-

described nomadic artist Sarah Chalmers has lived and painted scenes from around the world, using watercolours

to capture the places she has visited. Having been included in “Christie’s New Contemporaries”, Elaine Watt’s use of long brush strokes and thick oil paint create a heavily worked surface becoming a landscape itself.

The work of Katsutoshi Yuasa (b. 1978) and Neil Raitt (b. 1986) investigate implications of technology on how we view the landscape of the world around us. Their works are concerned with the digitalisation of the physical world and how these representations relate to our real-world experience. Katsutoshi Yuasa uses his own digital photographs as reference for his woodcut prints, aiming to extend the instantaneous capturing of light of photography into the more personal lengthy process of woodcut printing. Through the use of accelerated machine-like production processes, Neil Raitt creates compositions of endlessly repeating landscape feature in order to explore ideas of abstraction through repetition.



Neil Raitt, *Alpine* (2013), oil on canvas, 240 x 180 cm

The exhibition pays homage to the often overlooked genre of landscape painting, demonstrating its continued relevance within the minds of contemporary artists navigating the 21stC and provides an opportunity to delve into the land and its natural elements as source of inspiration in the visual arts.

About No 20 Arts

Opened in January 2017, No 20 Arts is a centre for contemporary arts. A multi-functional space, the gallery hosts a programme of exhibitions, performances and events that support emerging and established artists working across all media.

For more information and prices, please contact info@no20arts.com

No 20 Arts
20 Cross Street
London N1 2BG

+44 (0)207 226 9083
info@no20arts.com
no20arts.com