

Press Release

Near and Elsewhere

9 September - 1 October 2022

No 20
Arts

LUCIEN ANDERSON | RAYMOND ATTFIELD | JO DENNIS | GEORG WILSON



Lucien Anderson, **Waterworld** (2022), wood, chair, trousers, 115 x 58 x 44 cm



Ray Attfield, **Un Stère** (2017), chene verte, 10 x 10 x 10 cm

No 20 Arts
20 Cross Street
London N1 2BG

No 20 Arts is delighted to present *NEAR AND ELSEWHERE*, a group show featuring artworks by **Lucien Anderson**, **Raymond Attfield**, **Jo Dennis** and **Georg Wilson**. This exhibition brings together artists who narrate the idea of place, belonging, and territory through paintings, sculptures, and installations. '*NEAR AND ELSEWHERE*' interweaves distinct interpretations of identity to portray a collective experience.

Lucien Anderson was born in Huddersfield and lives and works in North East England. Anderson's works are loosely allegorical, sitting as artefacts imbued with a personal narrative. Excited by everydayness, belonging and transience, the evocative forms of houses and boats are reoccurring motifs. See-sawing between purpose and whimsy, any implication of function in Anderson's work is undermined by an arbitrary playfulness. Considering scale, both physical and in terms of ambition, Anderson is interested in the notion of "the endeavour", pioneers at frontiers, survival, quiet resilience and the myth of the cowboy.

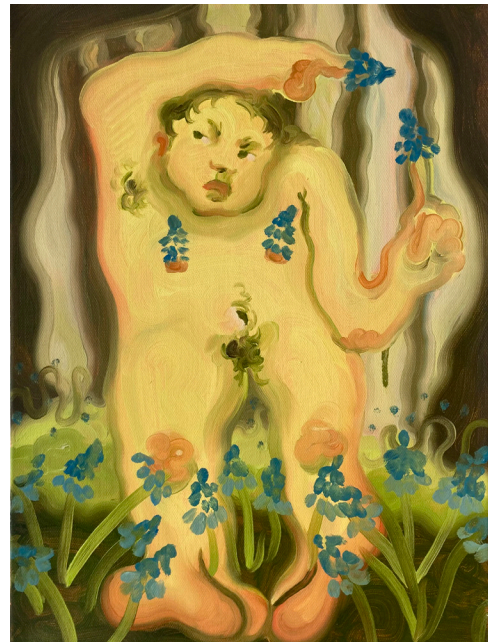
Raymond Attfield (b. 1938) is an architect and a musician. This exhibition will mark the debut of his work created over ten years. Attfield allows raw materials to guide him by their physical potential and cultural significance. His work makes oblique references to man-made conflicts with the natural world created in the pursuit of building a civilisation. Despite this subtle implication in his work, he sees his work as a separate entity; living with new meanings through the subjective interpretation of the viewer.

Jo Dennis is based in south-east London. She recently completed her MA in painting at the Royal College of Art, London. She is the co-founder of Asylum and Maverick Projects, artist-run spaces in south-east London. Her work investigates the idea of home, memory, and mortality. Found objects and waste items are used as catalysts to explore our emotional connection to places. Dennis amplifies the sensibilities embodied in these structures, remnants and residual material in her installations.

Georg Wilson is a London-based painter and the co-founder of All-Mouth Gallery. She recently completed her MA in painting at the Royal College of Art. Last year, she was awarded the Elizabeth Greenfields Award. Wilson's paintings peer between layers of England's folklore history, landscape and custom, searching for a way to a strange new home, where murky mess of weird narratives can intertwine and live together. By teasing this obscured knowledge into the present, she hopes to enchant the viewer into a sense of curiosity about this land.



Jo Dennis, **Into the light** (2021), acrylic, oil and spray paint on found object, glass and wood, 89 x 66 cm (framed)



Georg Wilson, **Muscari Mist** (2021), oil on canvas, 40.6 x 30.5 cm

About No 20 Arts

Opened in January 2017, No 20 Arts is a centre for contemporary arts. A multi-functional space, the gallery hosts a programme of exhibitions, performances and events that support emerging and established artists working across all media.

For more information and prices, please contact info@no20arts.com

No 20 Arts
20 Cross Street
London N1 2BG

+44 (0)207 226 9083
info@no20arts.com
no20arts.com